

# 492.3.409

## Vacuum cleaner motor performance

# DOMEL®

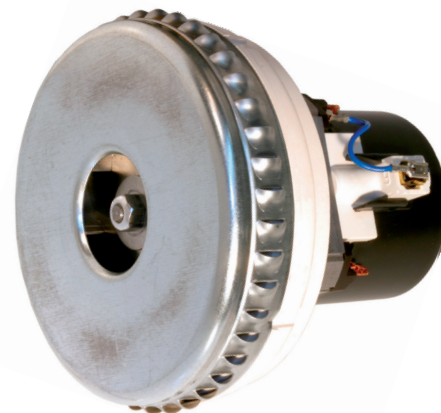
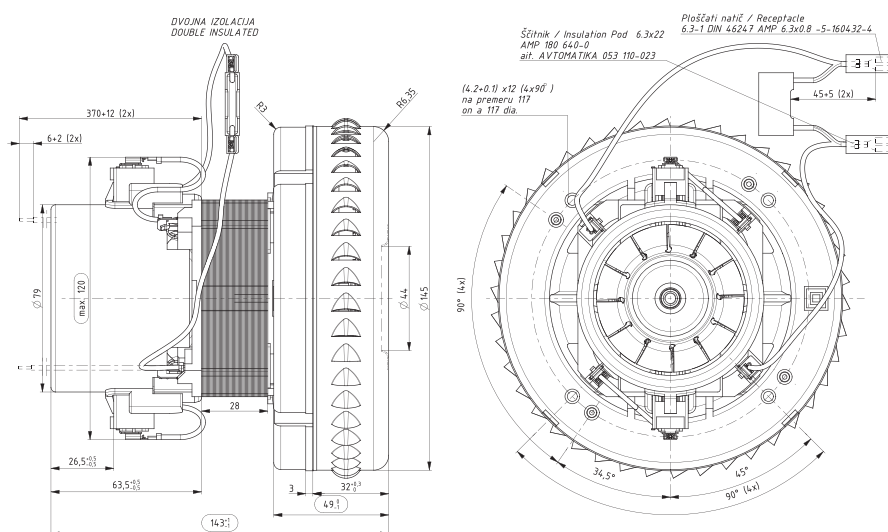
Vacuum cleaner motors with double insulation 492.3.409 / 1200W / 230V / 50Hz are used for wet and dry aspiration. Technical data and dimensions are given in the table. Vacuum motors consist of universal commutator motor and single fan stage. The rotor is supported with two ball bearings enabling vertical or horizontal installation of motor. The motor is designed for insulation class 130 (B) and constructed according to EN 60335-1.

### Technical data:

Normal operation:	$P_m$	$\geq$	1280	W
Vacuum:	$P_{max}$	$\geq$	19,1 76,5	kPa in H <sub>2</sub> O
Air Flow at $\phi 50$ :	$Q_{\phi 50}$	$\geq$	64 135	dm <sup>3</sup> /s CFM
Air Power:	$P_{2max}$	$\geq$	445	W
Efficiency:	$\eta_{max}$	$\geq$	36	%
Mass:	$m$	=	1,84	kg

Voltage:	230 V
Frequency:	50 Hz
Nominal Power:	1200 W

## Max. power 1350W



Dimensional and performance data are subject to change without notice.

Orifice		Current	Input Power	Speed	Pressure		Air Flow		Air power	Efficiency
mm	in*	A	W	min <sup>-1</sup>	kPa	in H <sub>2</sub> O	dm <sup>3</sup> /s	CFM	W	%
50	2	6,08	1352	23537	2,0	7,3	67,3	143,4	135	10,0
40	1 1/2	6,11	1360	23548	4,3	21,0	62,8	128,3	270	19,9
30	1 1/8	5,97	1332	23857	9,2	40,0	51,0	101,4	469	35,2
23	7/8	5,53	1236	24974	13,1	53,8	35,5	71,2	464	37,5
19	3/4	5,19	1166	25978	14,8	59,3	25,7	54,7	380	32,6
16	5/8	4,92	1107	26781	15,9	64,1	18,9	39,5	301	27,2
13	1/2	4,58	1033	27877	17,2	69,2	12,9	26,3	222	21,5
10	3/8	4,27	965	29042	17,9	72,6	7,9	15,4	141	14,6
6	1/4	4,01	909	30261	19,0	76,5	3,5	7,2	66	7,2
0	0	3,87	879	30921	20,1	80,5	0,0	0,0	0	0,0

Data above represent the performance of an average motor sample. Individual data may vary due to normal manufacturing variations.

\* Orifice in inch is only approximative.